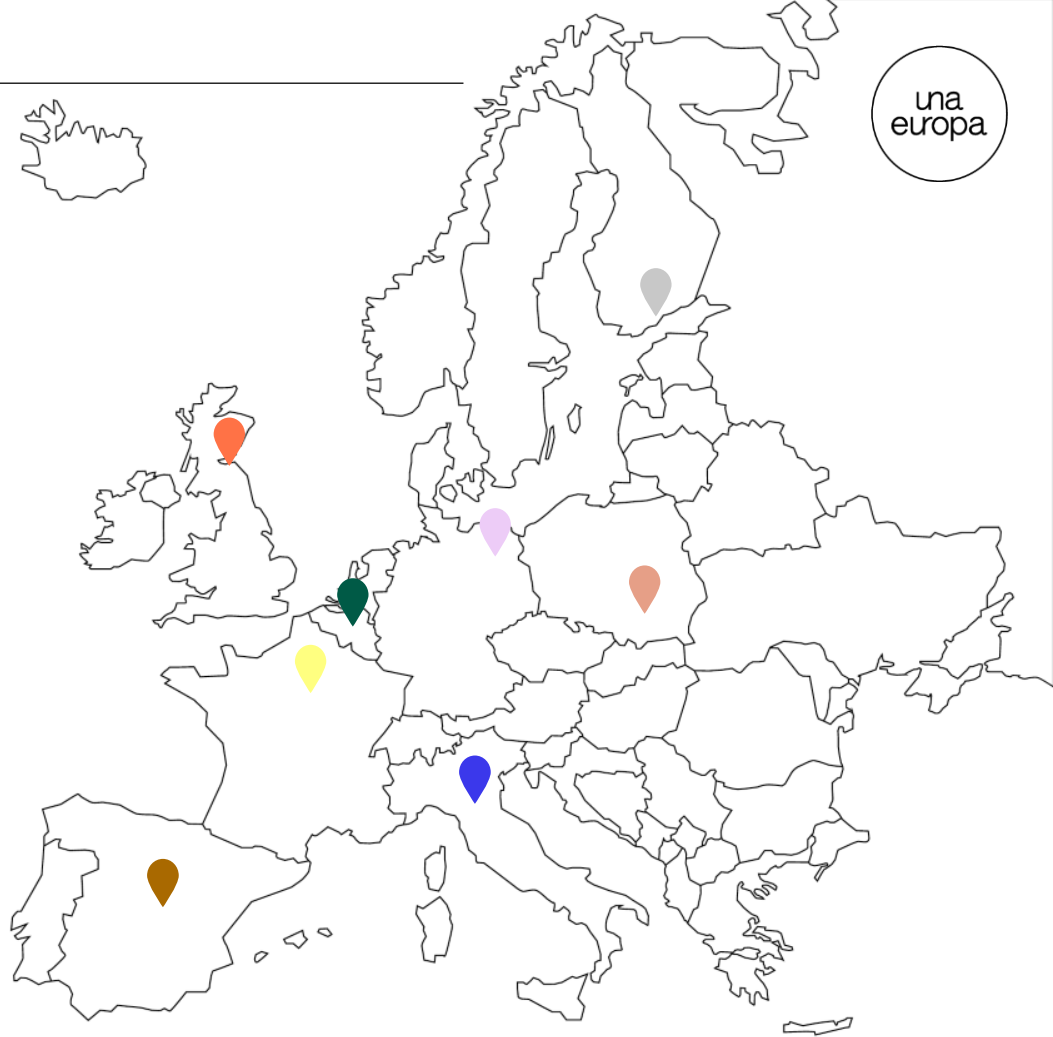


# Quality Assurance and EUniQ

March 2021

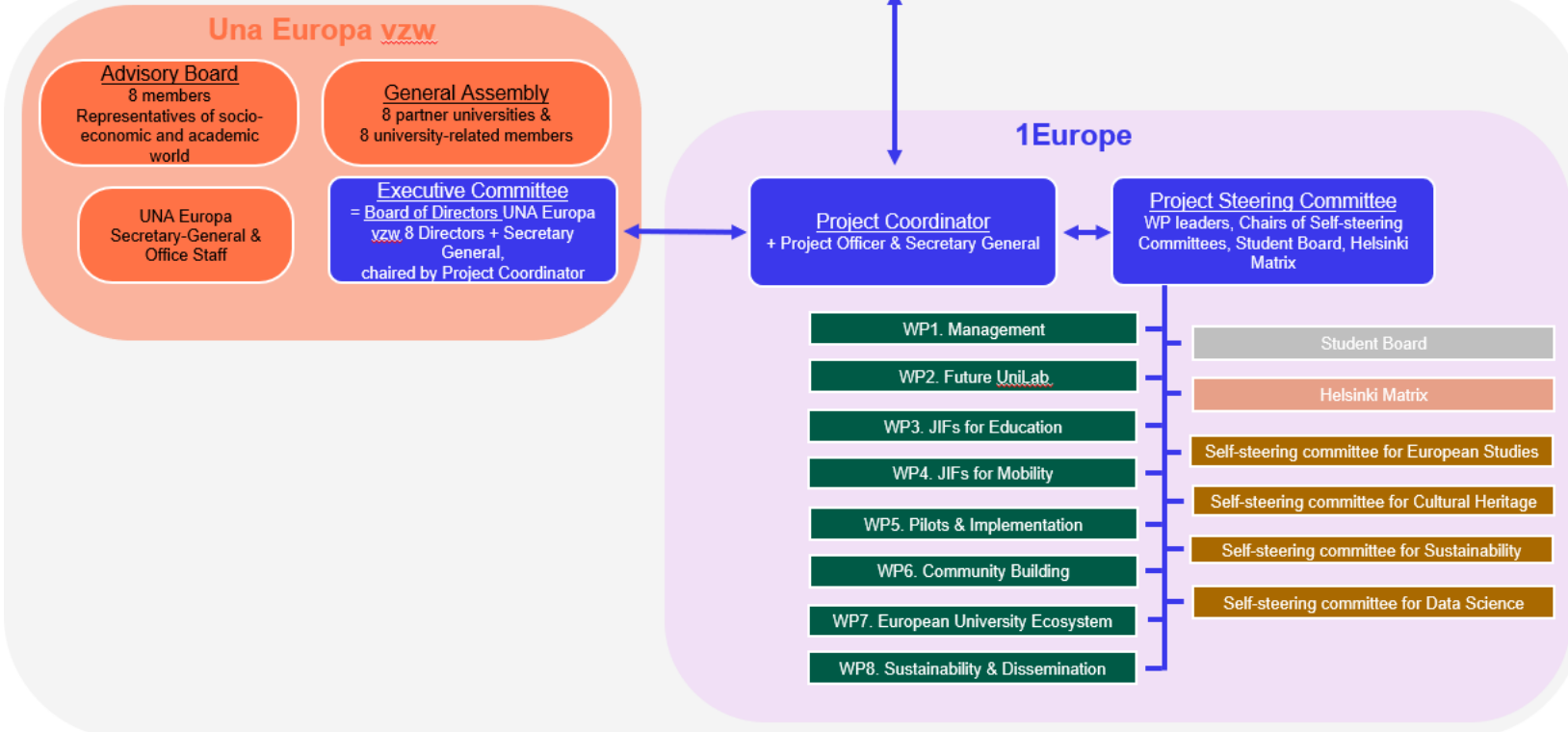


- + Freie Universität Berlin
- + Università di Bologna
- + University of Edinburgh
- + Helsingin Yliopisto
- + Uniwersytet Jagielloński  
w Krakowie
- + KU Leuven
- + Universidad Complutense  
de Madrid
- + Université Paris 1  
Panthéon-Sorbonne





European Commission

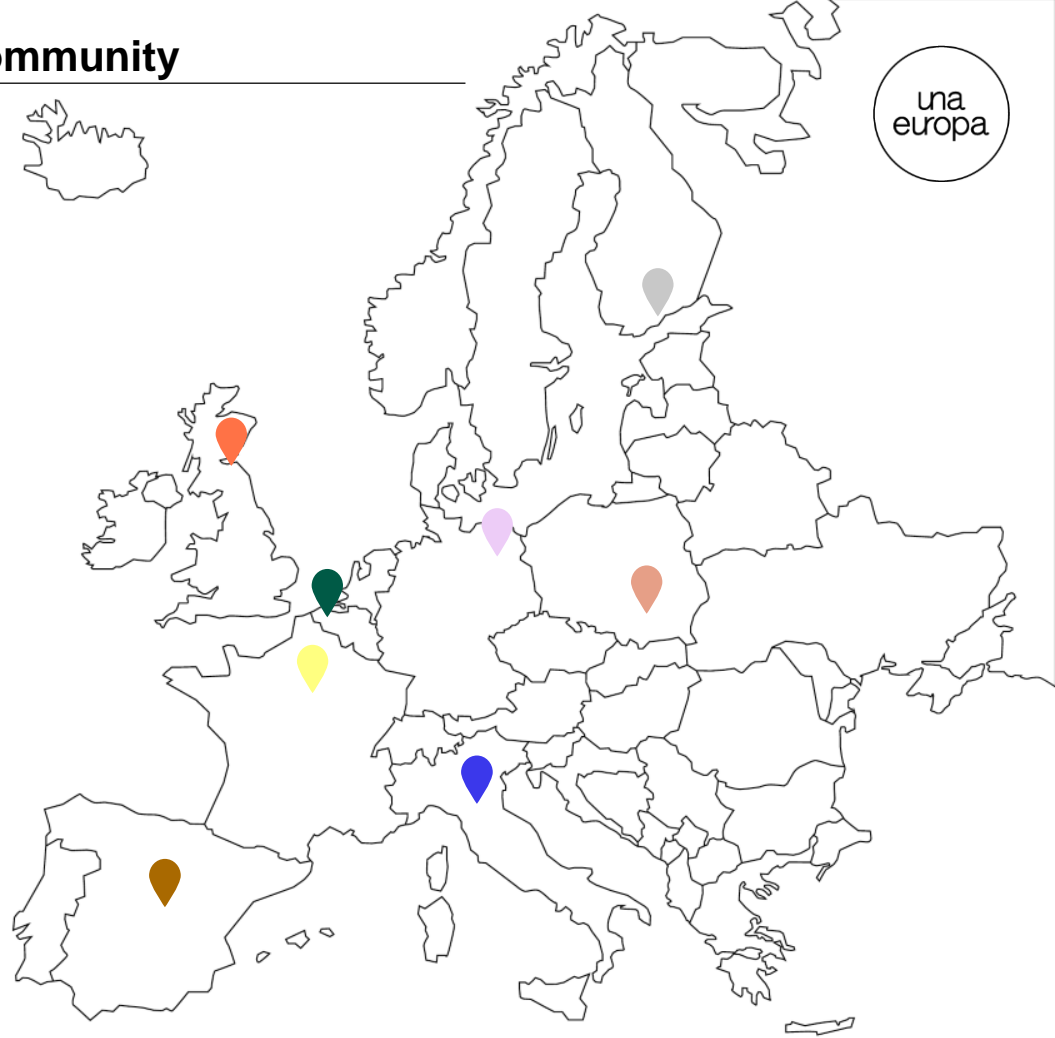


# Managing Una Europa is all about the community

---

una  
europa

- + Academic Community
- + Community of Practices
- + Lead University approach
- + Sustainability



# Joint Innovative Formats



	Cultural Heritage	European Studies	Sustainability	Data Science & AI
Joint Bachelor		Blue	Dark Green	
Joint Master		Blue		
Joint Doctoral Spaces	Orange			
Joint Micro-Credentials			Dark Green	
Joint Continuous Education Certificate	Orange		Dark Green	Light Purple
Joint MOOCs			Dark Green	Light Purple
OER	Orange	Blue	Dark Green	Light Purple
Una Chairs	Orange	Blue	Dark Green	Light Purple
Challenge-based & service learning	Orange	Blue	Dark Green	Light Purple

# Joint Bachelor European Studies: internal QA



**Overall approach: trust in each other's internal quality assurance systems**

- Common understanding:
  - ✓ QA system of partners undergo cyclical external review by trustworthy agencies (EQAR-registered, compliant to ESG)
  - ✓ Full confidence in the fitness for purpose of the quality management systems of each partner institution
- From this follows:
  - ✓ Possibility to build on the existing structures within the partners institutions to the maximum extent
  - ✓ Lean joint strategy, which avoids duplicating efforts
- At the same time:
  - ✓ Need for a joint framework to ensure effective decision-making and communication between the partners

# Joint Bachelor European Studies: internal QA



## Three main actions to design a joint overarching system:

- I. Reaching consensus on general principles for quality assurance
  - ✓ Principle of verified trust
  - ✓ Principle of subsidiarity
  - ✓ Principle of core practices
- II. Agreeing on a joint structure to monitor the quality of the entire programme
  - ✓ Body responsible for QA of the joint bachelor: Academic Steering Committee (with support from Administrative Committee)
  - ✓ Responsibility:
    - Checking if minimal agreements on QA are implemented by the partners.
    - Considering and discussing feedback resulting from QA-initiatives at partner institutions
    - Safeguarding the overall fitness for purpose of the curriculum, incl. its tracks, majors, minors,...
- III. Ensuring transparency and trust in the internal quality assurance systems of each partner

# Quality Assurance in our project



## Project Management

---

- Project coordination – oversight of Quality Management Plan
- Project Steering Committee
- Executive Committee

## Quality Assurance Board

---

- Advice regarding the quality of 1Europe outputs
- Advice regarding the implementation of the project
- Four external stakeholders: innovation and contribution to EHEA

## Quality Assurance Cluster

---

- Co-creation and permanent evaluation of the 1Europe formats and pilots
- Creation of a Joint Quality Assurance System

## National Accreditation Agencies

---

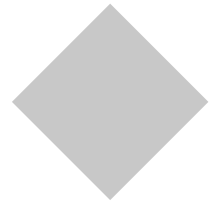
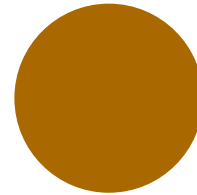
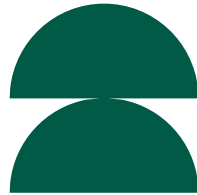
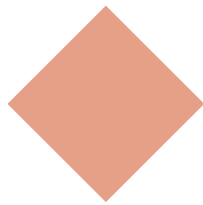
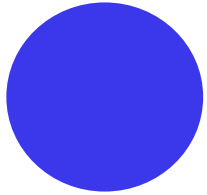
- Accrediting new and existing study programmes
- Assessing the quality assurance of higher education institutions



# Preparing for the future



Launching an alliance-wide exercise on future narrative  
– points for consideration:



Enrich the governance structure of Una Europa in parallel with that of the 1Europe project

Develop Quality Assurance Board for whole alliance

Extend student involvement

Extend flexible support services

Continue discussions at European level

Strive for independence

Reconsider mobility

# Lessons learned from EUniQ



- Rewarding exercise
- Dialogue over several meetings and several months were necessary
- Competent panel, even if three representatives is limited
- Good framework for evaluation to be developed as alliances develop
- Advocate to keep subsidiarity approach – activities are carried out at appropriate level by single universities and based on trust between partners (Quality Assurance system)

# Thank you



Contact:  
Emily Palmer, Secretary-General,  
[Emily.Palmer@una-europa.eu](mailto:Emily.Palmer@una-europa.eu)

[www.una-europa.eu](http://www.una-europa.eu)

